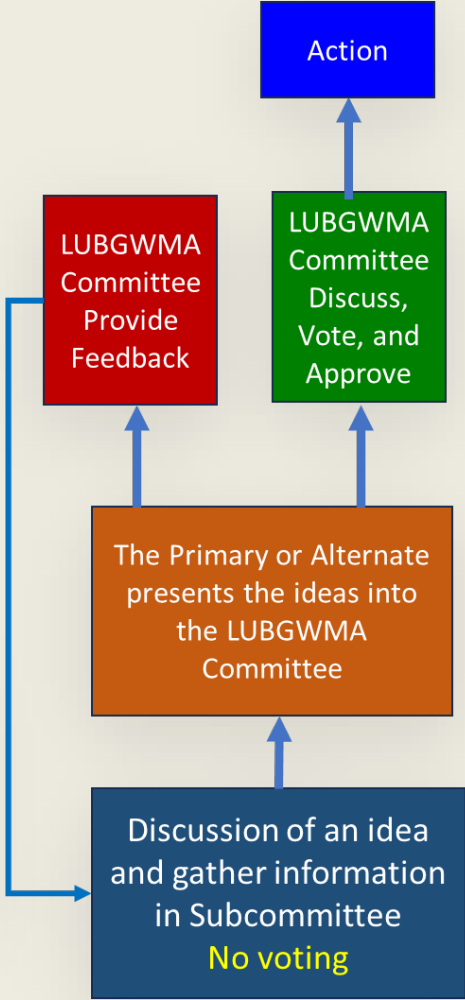
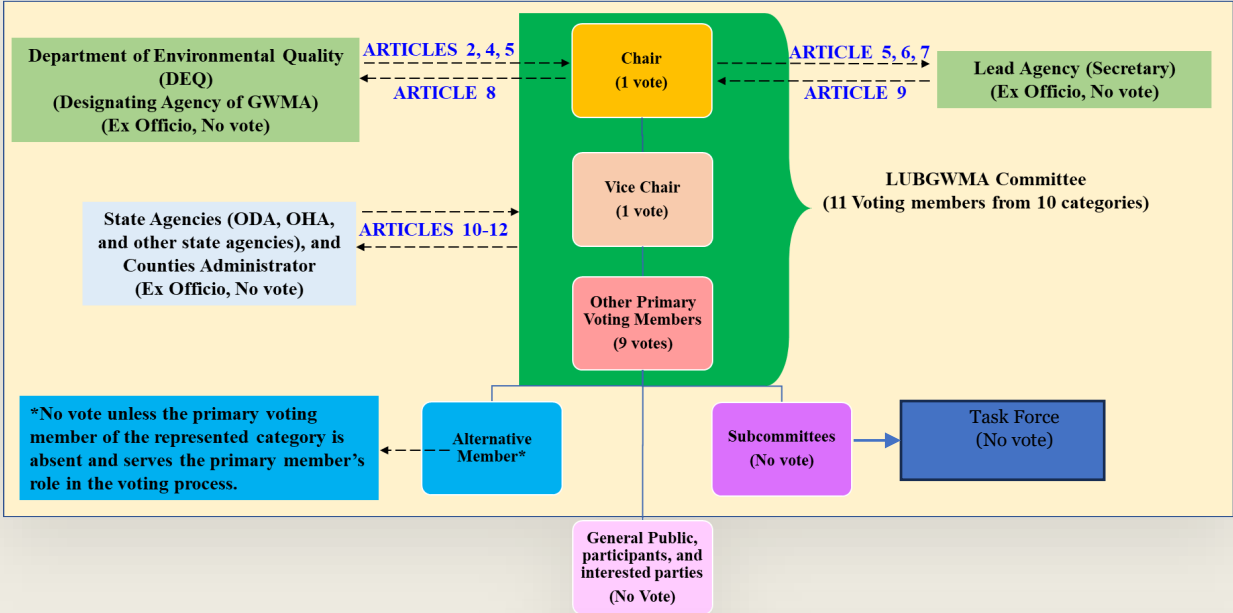
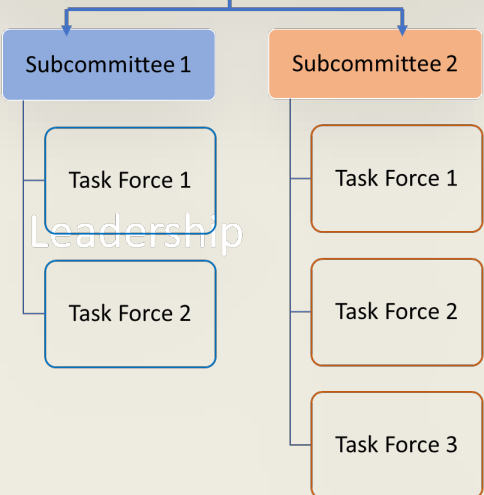


Structure and Decision-Making Process

LUBGWMA Committee Organizational Structure



LUBGWMA Committee



Subcommittee leadership roles like "Subcommittee Coordinator" to be assumed by:
 Primary Member (PM) or Alternate Member (AM) from the LUBGWMA Committee.

Each Task Force is led by a **Task Force Facilitator**.
 Maintains focus on specific objectives, promoting efficient work processes.

**BYLAW
 Established**