

# LUBGWMA Advisory Committee Meeting

April 7, 2026



**OREGON**  
**DEPARTMENT OF**  
**AGRICULTURE**



# Agenda

- Welcome, intros, review agenda
- LUBGWMA Advisory Committee member updates
- Progress updates related to Nitrate Reduction Plan implementation
- Nitrate Reduction Plan update & discussion
- Wrap up and adjourn

# LUBGWMA Committee and Agency Roles



**State Agencies:  
Oregon Nitrate  
Reduction Plan  
for LUBGWMA**



**Committee members represent a constituency. They bring information about what agencies are doing to that constituency and bring that constituency's questions and ideas to agencies.**

**State agencies provide updates about Nitrate Reduction Plan and consider questions and feedback from committee members. Meetings are also a space for local and Tribal governments to share relevant updates.**

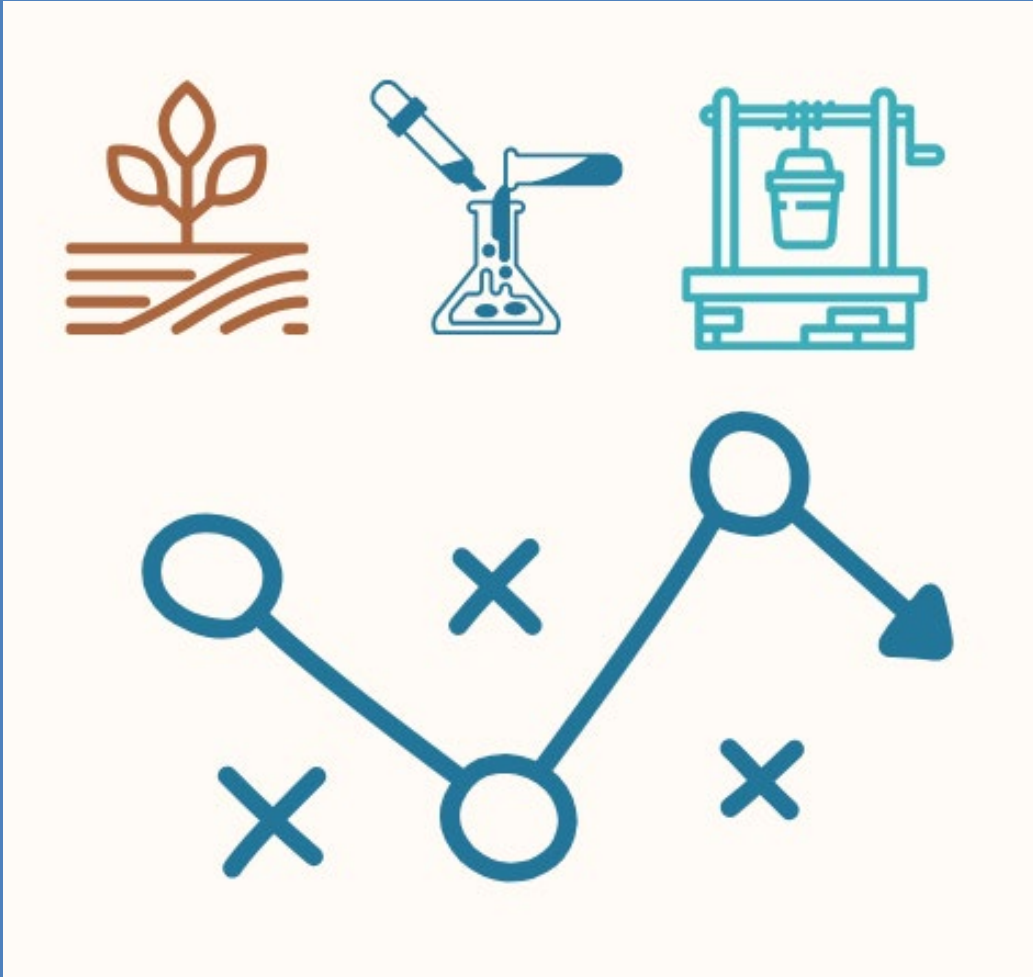
**State agencies, with feedback from committee members, implement and continuously refine strategies to reduce nitrate in groundwater.**



# Nitrate Reduction Plan Annual Progress Report

## Highlights from each agency:

- ODA
- DEQ
- OWRD



# Nitrate Reduction Plan: Overview and Structure



## Nitrate Reduction Plan structure:

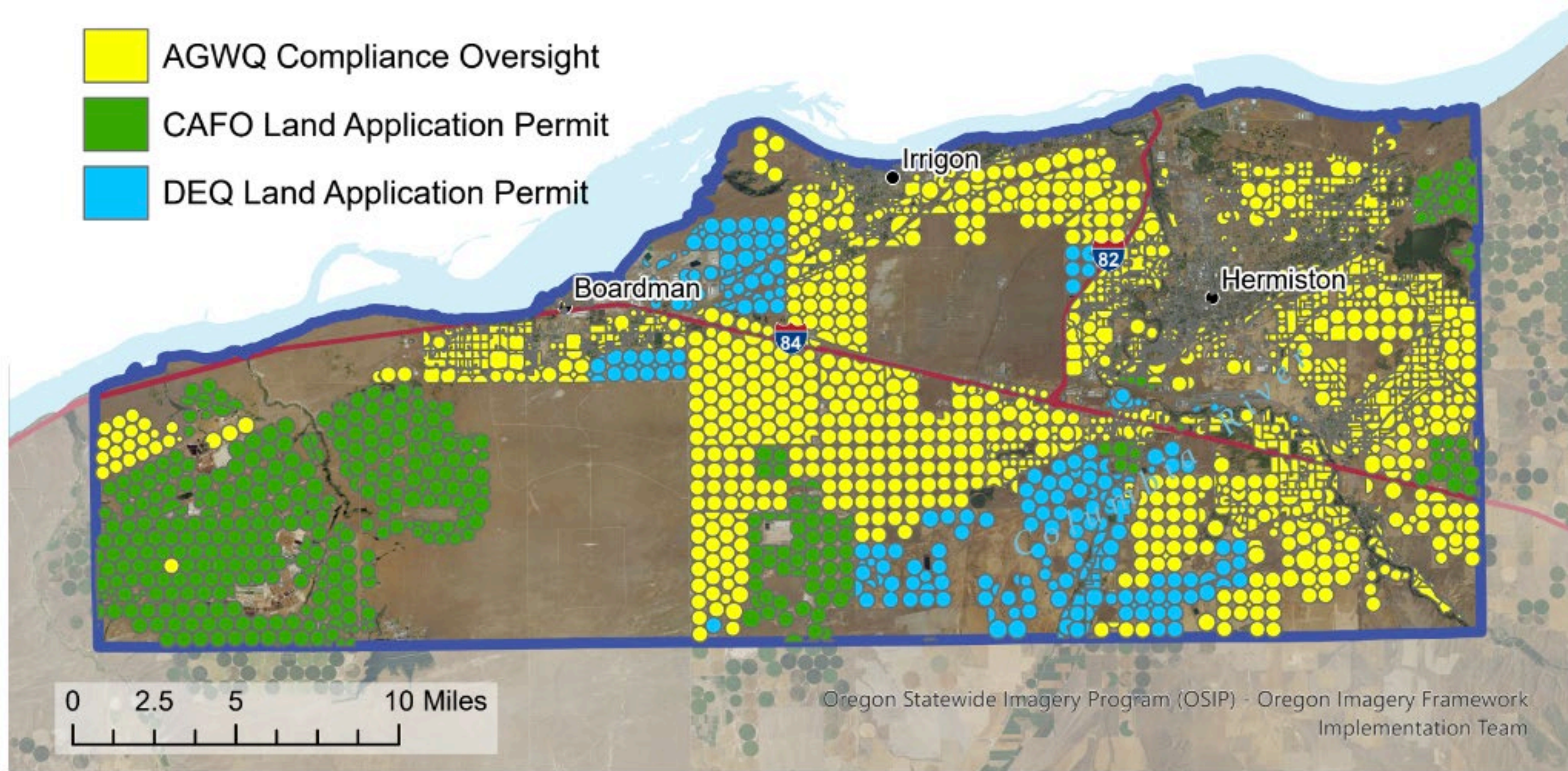
- Background
- Collaborative Governance
- Nitrate Reduction Strategies by Source
- Monitoring, Data, and Analysis
- Safe Drinking Water Strategies (OHA)

# ODA: Annual Progress Highlights

- 1. Water Quality Groundwater Rules:** Permanent Rules filed 3/13/26
- 2. Water Quality Compliance:** Investigation updates
- 3. Strategic Implementation Area(SIA):** On track with second SIA in planning
- 4. BMPs/Livestock Inventory:** Future development of resource hub for growers
- 5. CAFOs:** General NPDES permit renewal

# Lower Umatilla Basin Groundwater Management Area

-  AGWQ Compliance Oversight
-  CAFO Land Application Permit
-  DEQ Land Application Permit



This product is for informational purposes and may not have been prepared for, or be suitable for legal, engineering, or surveying purposes. Users of this information should review or consult the primary data and information sources to ascertain the usability of the information.



**OREGON  
DEPARTMENT OF  
AGRICULTURE**

635 Capitol St NE  
Salem, OR 97301-2532 USA

Prepared By: ODA GIS Team  
Date Printed: 8/29/2024

ENT OF  
URE



# DEQ: Annual Progress Highlights

- 1. Wastewater permits:** All facilities on track to meet compliance schedules.
- 2. Quarterly sampling & larger-scale synoptic completed**
- 3. Trends analysis report published Jan. 2025.**
- 4. Septic funding:** three septic loans through nonprofit lender. Program didn't receive additional legislative allocations.
- 5. Wastewater infrastructure funding:** 10 active, completed, or pending public projects through CWSRF.
- 6. Storymap:** <https://lubgwma.org/about/>

# Updated 2025 Trends Analysis

Figure 9  
Nitrate Trends at Individual Wells  
Groundwater Nitrate Trend Analysis - LUBGWMA Well Network

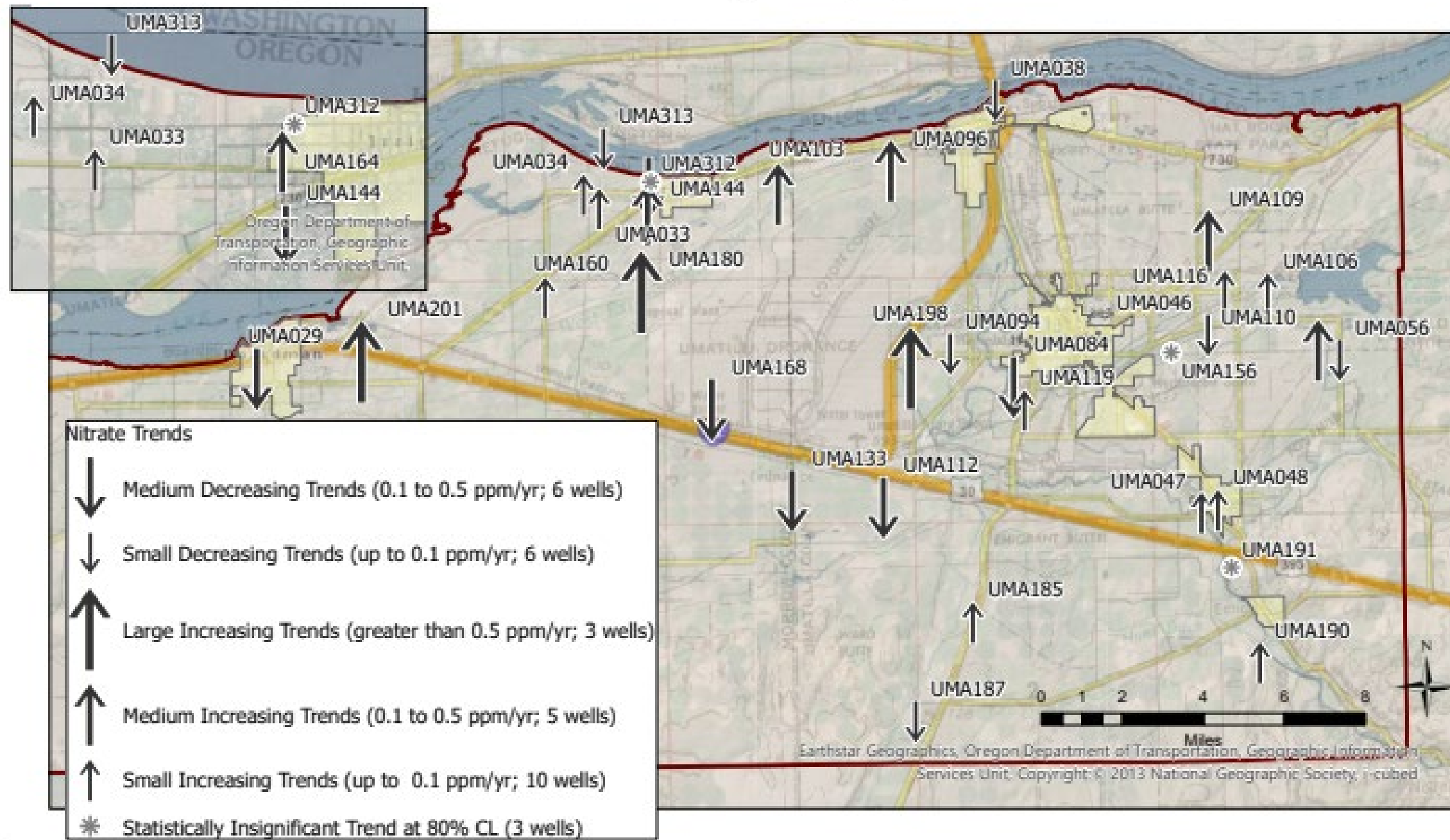


Figure 11  
Network-Wide Trend Over Time  
Groundwater Nitrate Trend Analysis - LUBGWMA Well Network

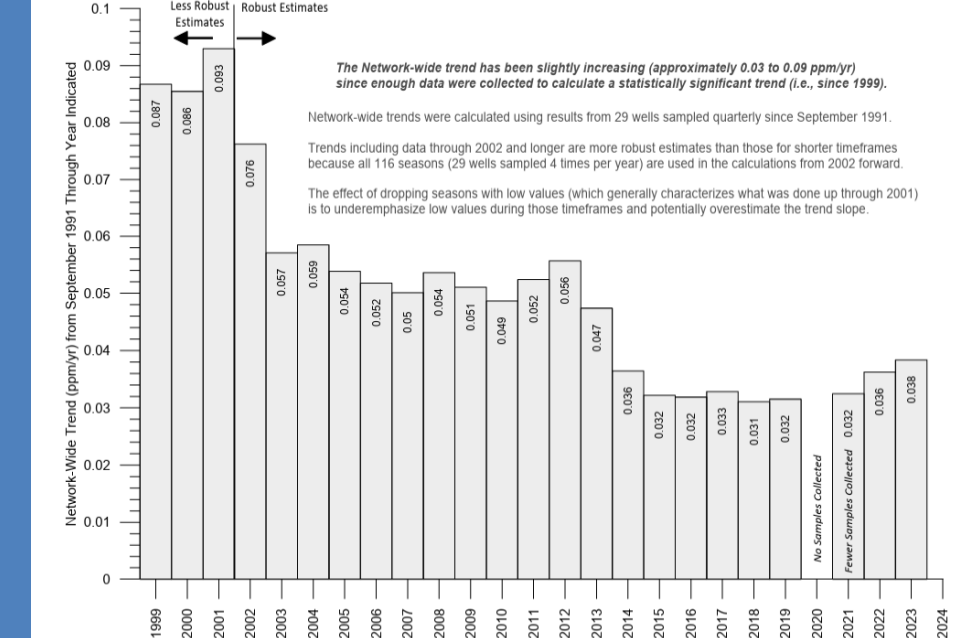
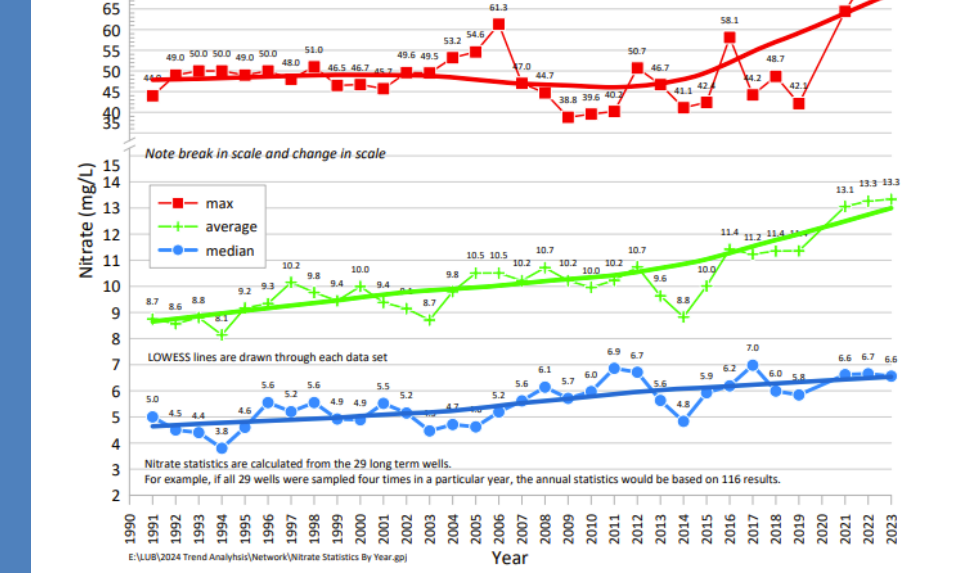


Figure 7  
Nitrate Statistics by Year  
Groundwater Nitrate Trend Analysis - LUBGWMA Well Network




<https://ordeq.org/NitrateTrend>

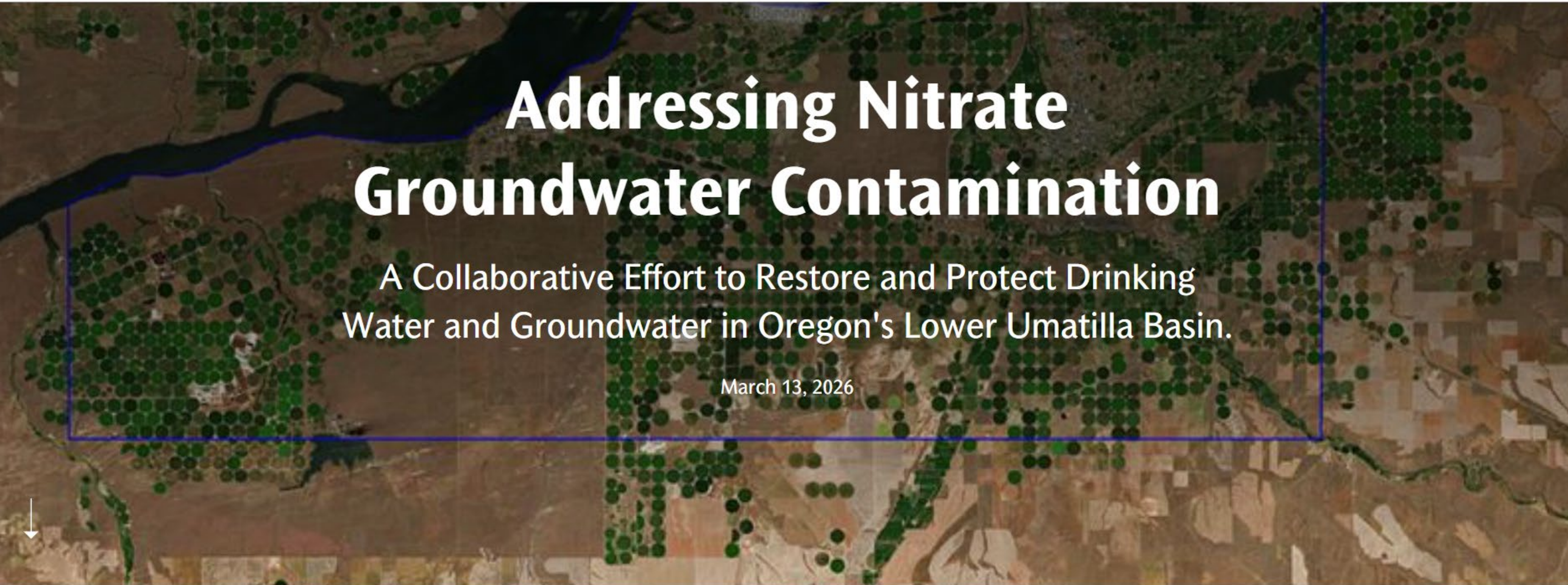


OREGON  
DEPARTMENT OF  
AGRICULTURE



# Storymap – Thanks, Morrow County!

 Addressing Nitrate Groundwater Contamination ↑ ...



## Addressing Nitrate Groundwater Contamination

A Collaborative Effort to Restore and Protect Drinking Water and Groundwater in Oregon's Lower Umatilla Basin.

March 13, 2026

[Overview](#) [Background](#) [Health Risks](#) [Get your Well Tested](#) [Nitrate Sources](#) [Who's Involved](#) [Data](#) [Local Efforts](#) [How You Can Help](#) →

<https://storymaps.arcgis.com/stories/26f0de07c73a4f69acc0ad1c5050c15a>



**OREGON  
DEPARTMENT OF  
AGRICULTURE**



# OWRD: Annual Progress Highlights

- Inspected 96% of all new, altered, or abandoned wells in the LUBGWMA
- Drafted an updated to the Lower Umatilla Basin Conceptual Model and send out for peer review
- Continued collecting quarterly groundwater level data in the LUBGWMA
- Developed and launched a comprehensive backflow prevention device program

# Nitrate Reduction Plan: Overview of Updates



- 1) Updated strategies – based on progress since publication
- 2) Added strategy – OWRD backflow program
- 3) Clarifications, formatting updates, minor corrections

# Overview of public feedback

## Agencies asked:

- What additional strategies might the state agencies consider as we move forward with implementing this plan?
- What additional resources or expertise are you aware of that could assist with implementation?
- Do you have any additional feedback for the agencies?

# Overview of public feedback

## General categories:

### 1. Actions agencies are implementing within existing resources.

- Domestic well testing and public health outreach
- Regulating industry and agriculture
- Data collections/analysis: water monitoring, well construction, land use

### 2. Actions agencies are considering for future.

- Agronomic rate refinement – ongoing and underway
- Septic repair/replacement funding adjustments
- Data collection/analysis refinement: expanded network, types of sampling

### 3. Frustrations and concerns about pollution, pace of action, or government operations.

# General Multi-Agency Updates

- **Collaborative Governance Structure:** Finalized MOU
- **Community Representation:** Updated to reflect clarified roles and responsibilities of advisory committee and state agencies.
- **Strategy formatting:** Consolidated objective, lead agency, schedule, and actions into timeline tables.
- **Appendix** of public feedback and state agencies' response.

# ODA: Planned Updates

- Ag Water Quality Groundwater Rules completed; program implementation next
- Implementation of second Strategic Implementation Area (SIA)
- Best Management Practices (BMP) resource hub development

# DEQ: Planned Updates

- **Updated map of nitrate data:** long-term well network, synoptic sampling, permitted sites
- **Trends analysis** of long-term well network complete; permitted site analysis up next.
- **Groundwater data coordination platform:** from EPA to OSU
- **Ongoing:** Plan to identify data gaps for nitrate leaching estimation update.

Figure 2-12

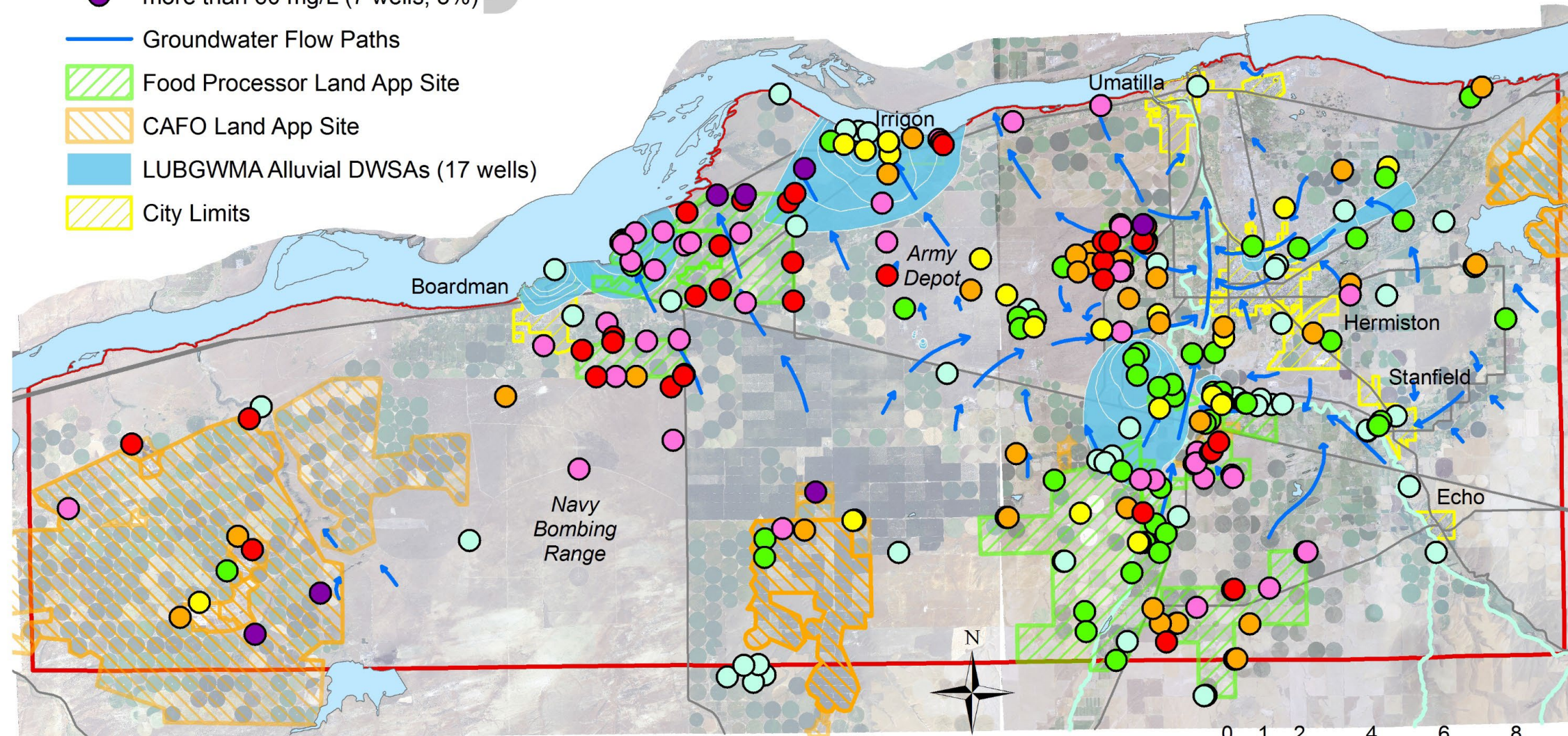
Composite of Available Nitrate Data in the LUBGWMA  
Second LUBGWMA Action Plan

**Legend**

- less than 3 mg/L (50 wells; 20%)
- 3 to 7 mg/L (53 wells; 21%)
- 7 to 10 mg/L (29 wells; 11%)
- 10 to 20 mg/L (34 wells; 13%)
- 20 to 40 mg/L (44 wells; 17%)
- 40 to 60 mg/L (38 wells; 15%)
- more than 60 mg/L (7 wells; 3%)

48% Exceed 10 mg/L Drinking Water Standard  
60% Exceed 7 mg/L GWMA Trigger Level

- Groundwater Flow Paths
- ▨ Food Processor Land App Site
- ▨ CAFO Land App Site
- ▨ LUBGWMA Alluvial DWSAs (17 wells)
- ▨ City Limits



255 wells sampled between November 2015 and April 2016.  
Wells sampled include the 17 alluvial aquifer public supply wells, 56 private water supply wells, 10 irrigation wells, 171 monitoring wells, and 1 stock watering well.

# OWRD: Planned Updates

- Add the backflow program; continue inspections and expand outside of the LUBGWMA
- Utilize CDS funds to install new monitoring wells, well assessments, and quantify consumptive use trends from 1984 – present
- Publish the update of the conceptual model
- Explore opportunities to utilize geophysics tools to better understand aquifer properties



# Thank you!

- Isaak Stapleton, ODA, [isaak.stapleton@oda.oregon.gov](mailto:isaak.stapleton@oda.oregon.gov), 503.931.5608
- Laura Gleim, DEQ, [laura.gleim@deq.oregon.gov](mailto:laura.gleim@deq.oregon.gov), 503-577-3697
- Chris Kowitz, ORWD [chris.c.kowitz@water.oregon.gov](mailto:chris.c.kowitz@water.oregon.gov), 541-278-5456
- Courtney Crowell, Gov. Office, [courtney.crowell@oregon.gov](mailto:courtney.crowell@oregon.gov), 541-429-2120



OREGON  
DEPARTMENT OF  
AGRICULTURE

